

Woman Question

- ✘ The “woman question” -- the fact or the phenomenon, **NOT** a thesis or a hypothesis--that there is discrimination, subordination, exploitation and oppression of women **AS** women, (differing in degrees) but cuts through class, creed, nationality. It is a global phenomenon.

✘ (Sr. Mary John Mananzan, OSB)

Effect of the Woman Question on Women

- Violence
- Exclusion
- Discrimination
- Marginalization
- Exploitation

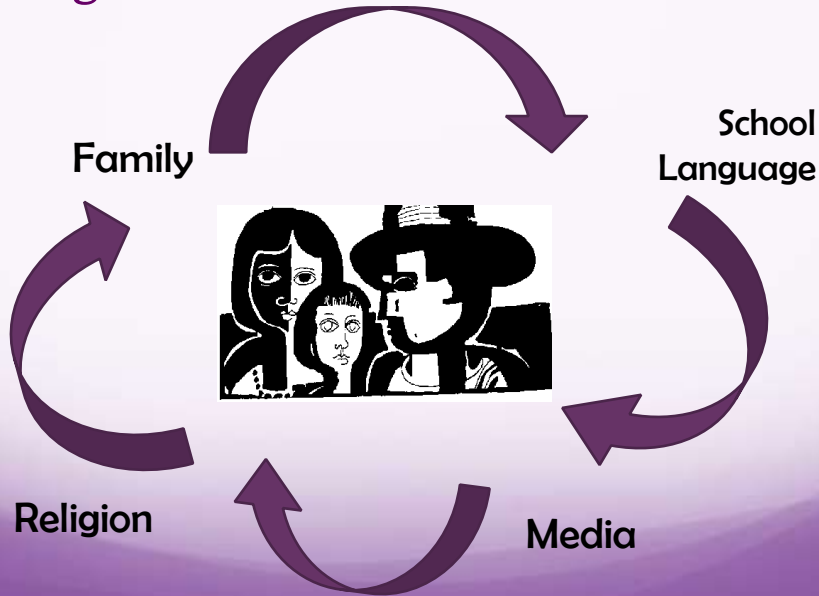


Effect of the Woman Question on Men

- Stereotypes men's roles, identities and attributes
- Places on men expectations and roles not of his own choice and decision
- Puts unnecessary burdens on men



Agencies of Gender Construction



Feminism Revisited

✕ Sandra Schneiders



It is an intellectual, spiritual and practical commitment to full personhood of every human being and right relationships among all creatures

Sandra M. Schneiders in *With Oil in their Lamps: Faith, Feminism and the Future*, MN: Paulist Press, 2000.

Goal of Feminism



- Recognizing that men and women are different, the goal of feminism is political, economic, and social equality (or developing an egalitarian community/society).



Patriarchy

- × Underlying principle: men control most economic resources and all social, economic and political institutions
- × Patriarchal societies enshrine assumptions that the heads of state must be male and male voices rightfully dominate the public/private spaces. (Abby Wilk)



Expressions of Patriarchal control



- ✗ Control over women's productive labor
- ✗ Control over women's body and reproduction
- ✗ Control over women's sexuality
- ✗ Control over women's mobility
- ✗ Control over property and other economic resources

Gendered Power

- ✗ In a research conducted in 2010 (Fortune Companies 500)
- ✗ only 3 percent (15 out of 500) of Chief Executive Officer (CEO) positions were held by women.
- ✗ The percentage does not increase in the top 1,000 companies.
- ✗ Source: Thomson & Armato, 13.





Gender Binary

Gender Inequality

Hegemonic masculinity

Vs

Emphasized Femininity



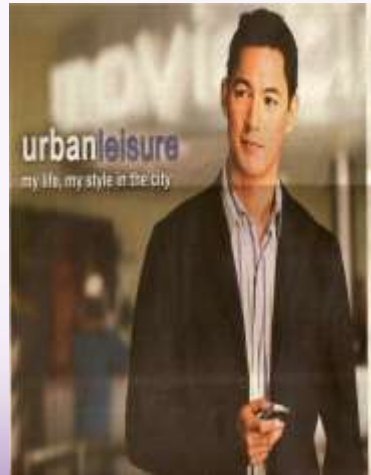
Emphasized Femininity

- ✗ Femininity organized around compliance with patriarchal heterosexual ideals of women's subordination
- ✗ Women oriented towards accommodating the desires and interests of men
- ✗ Seen in the display of sociability rather than technical competence



Hegemonic Masculinity

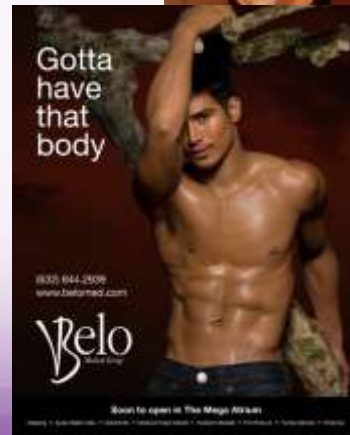
- ✗ Held up us models for boys and men (**strong, hyper muscular bodies**)
- ✗ Power bestowed on elite men (legitimizes elite men's power)
- ✗ Not all masculinities are equal
- ✗ *marginalized masculinities*



Masculinity as mediated by MEDIA

These constructed or mediated realities may have normative or prescriptive values

- × Hailed IDEAL but can be discriminating



Femininity as mediated by MEDIA



Gendered Family and housework



- × feminine household tasks are “never done”
- × and masculine tasks “get done.”

Gendered Family and housework

× Women as homemakers--making sure family is well taken cared of,



Gendered Family and housework



- ✗ Feminized tasks e.g. preparing meals, cleaning and doing the laundry are repetitive and emotionally taxing and never-ending asks.
- ✗ Second Shift (unpaid)

Gender Subordination Political System



Masculinized Leadership

23